

Servo drive

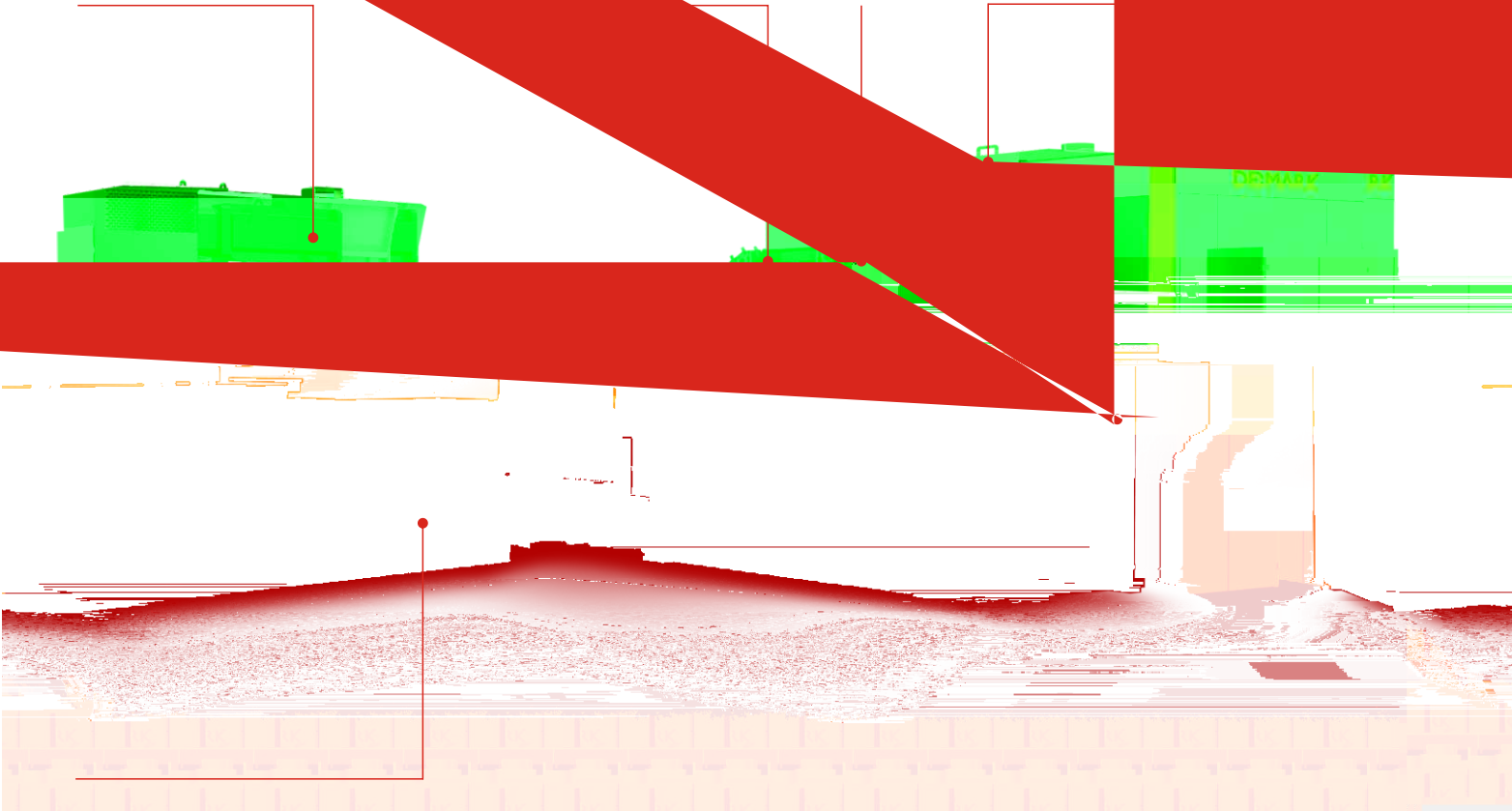
Pressure hold valve

Reliability

servo drive  
both pressure  
energy efficiency

With the advanced pressure hold technology, the system can ensure the plasticization and hold at the same time. The system has a better production.

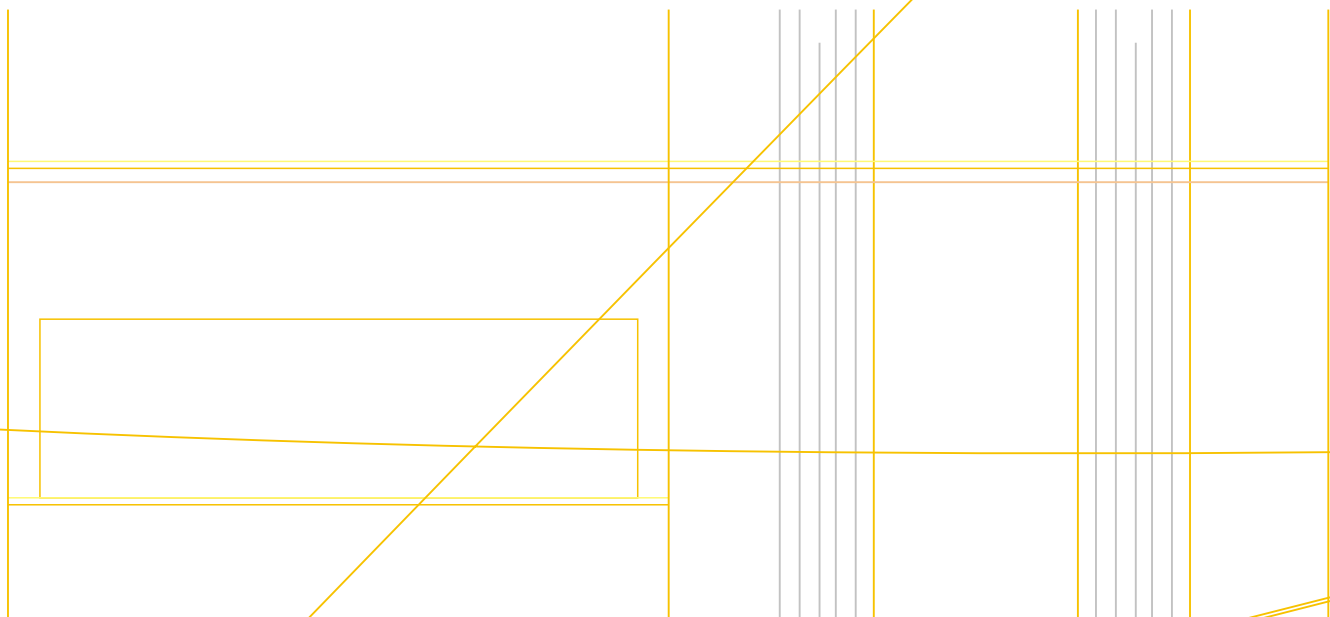
Special design for PET preform mold, which ensure the fast clamping movement and uniformly forced of the mold.

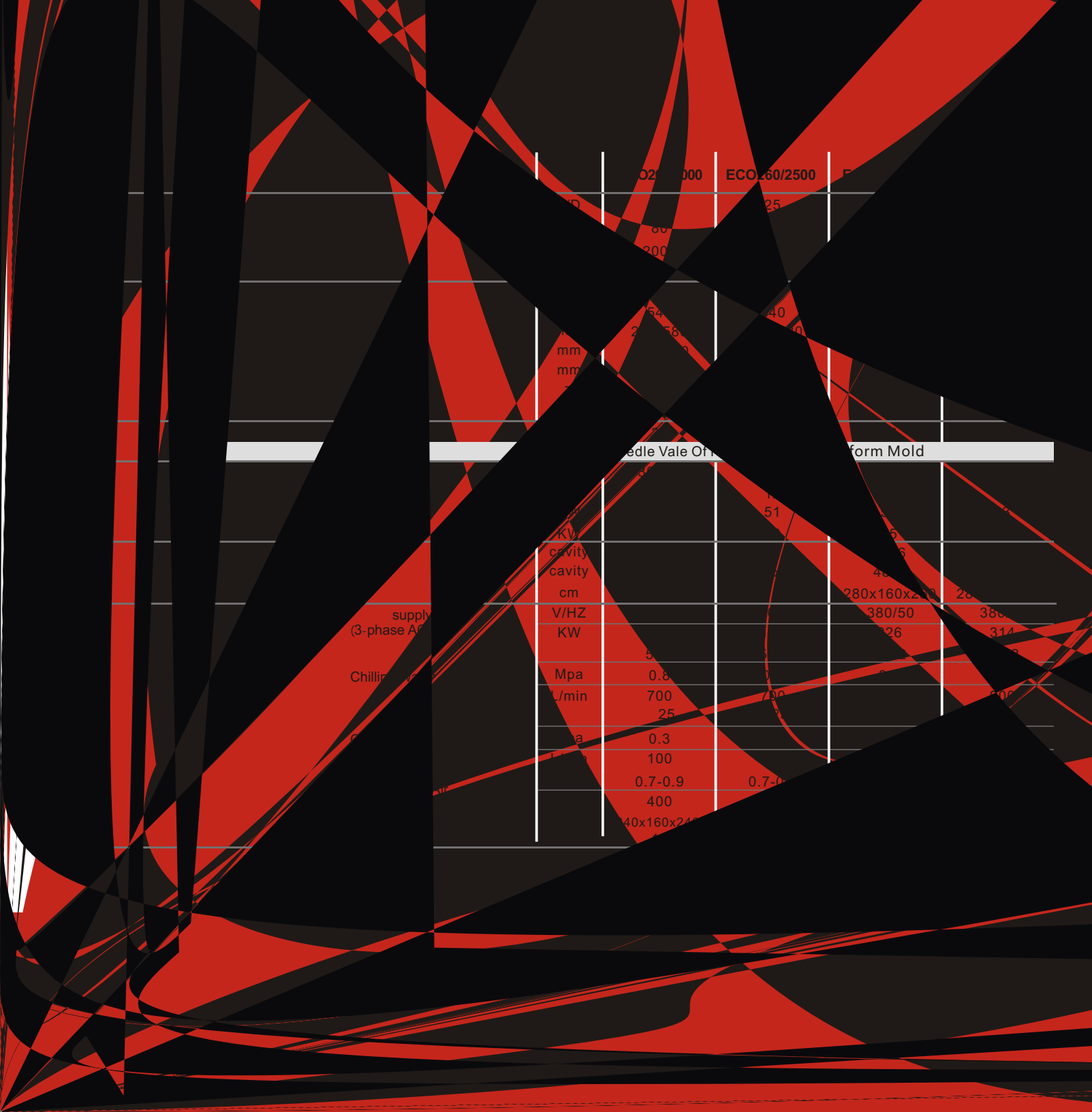


Servo motor drive hydraulic system

The hydraulic system was driven by a servo motor which ensure the lower energy consumption and sufficient hydraulic power supply.

# 西门子控制系统 SIEMENS control system





025 000

ECO260/2500

F

mm

25

30

200

mm

164

40

mm

200

40

Medle Vale Of

Form Mold

KV

51

cavity

36

cavity

36

cm

280x160x280

280

supply  
(3-phase AC)

V/HZ

380/50

380

KW

26

314

Chilling

Mpa

0.8

L/min

700

700

600

mm

25

mm

100

mm

0.7-0.9

0.7-0.9

mm

400

40x160x240

40x160x240

